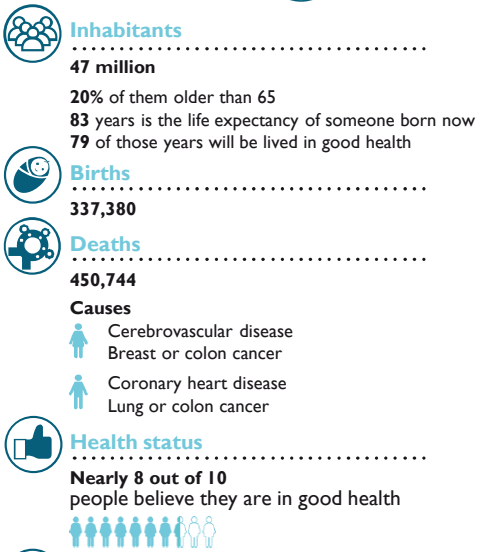
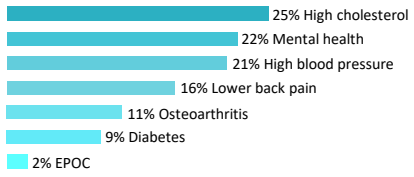


KEY DATA FROM SPAIN'S NATIONAL HEALTH SYSTEM

Population



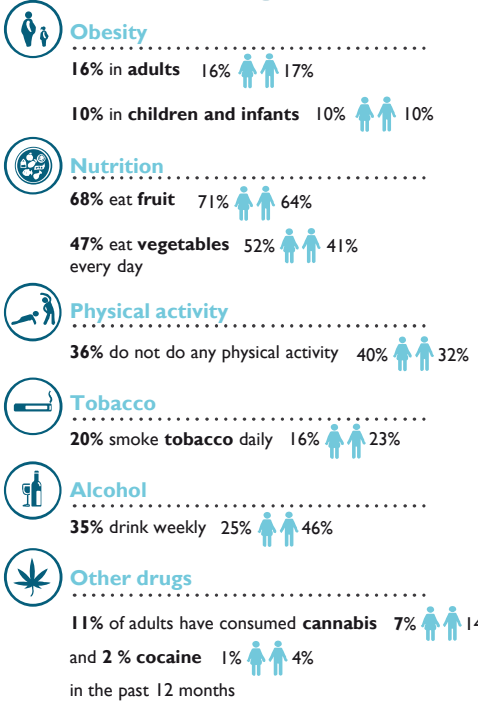
Principal chronic health problems



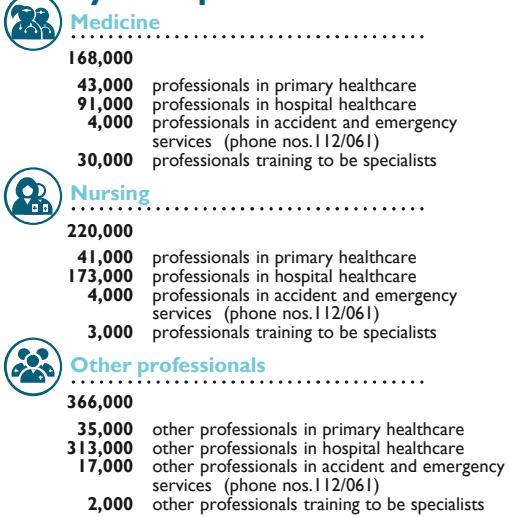
Public system coverage

Full Portfolio of Services for all people who reside in Spain.

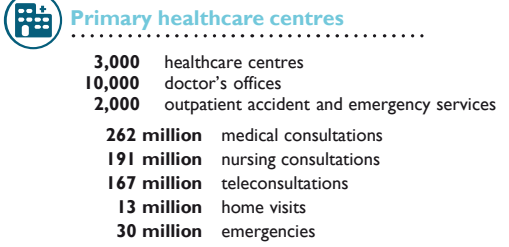
Lifestyles



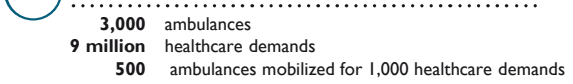
National Health System professionals



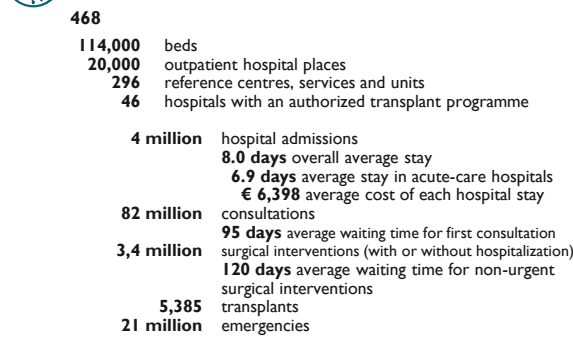
Healthcare



Accident and emergency (phone nos. 112/061)



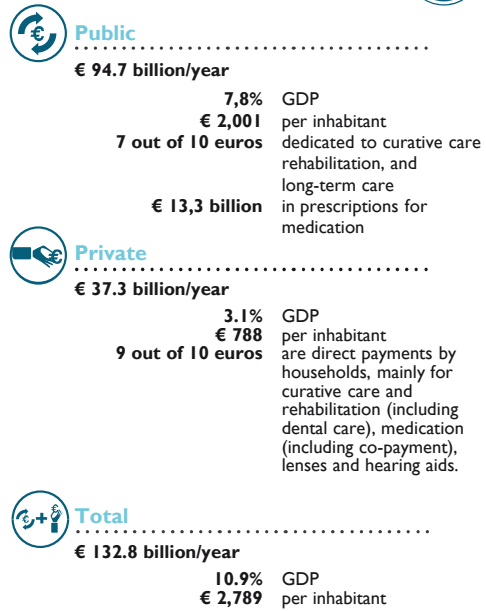
Hospitals



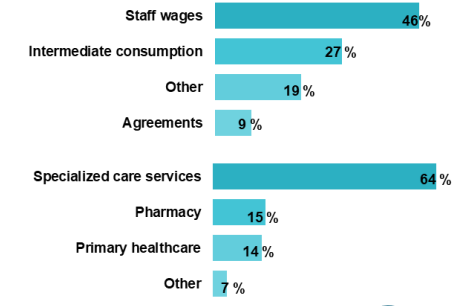
Research and innovation



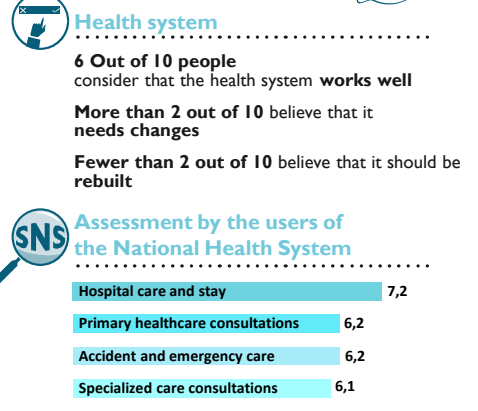
Health expenditure



Distribution of public health expenditure managed by the Autonomous Communities



Citizens' opinion



The data collected in this infographic are the most recent available in each of the existing sources of information in the Health Information System, at: